

## **CLASS 8 INTERNATIONAL 9200/9400 (1997-CURRENT)**

### **INSTALLATION INSTRUCTIONS**

1. PLEASE READ ALL INSTRUCTIONS COMPLETELY AND CAREFULLY PRIOR TO INSTALLATION.
2. REFER TO FIGURE 1 (PAGE 5) FOR INSTALLATION OF GRILLE GUARD.
3. ATTACH THE ASSEMBLED BRACKET UPRIGHTS TO THE BUMPER MOUNTING BRACKETS USING THE HARDWARE ALREADY INSTALLED ON THE BRACKET UPRIGHTS. PLEASE NOTE THE BUMPER MOUNTING BRACKET ORIENTATION ALONG WITH THE BRACKET UPRIGHT. FULLY TIGHTEN THESE ITEMS TOGETHER.
4. REMOVE THE 3 BOLTS, NUTS, AND WASHERS FROM ONE SIDE OF THE BUMPER FIRST. USING THE SUPPLIED HARDWARE INCLUDING SPACERS, ATTACH THE CORRESPONDING SIDE MOUNTING BRACKET TO THE BUMPER (BOLT & WASHER OUTSIDE, NUT & WASHER INSIDE). DO NOT FULLY TIGHTEN YET, THEY NEED TO BE ALIGNED AFTER THE GRILLE GUARD IS IN PLACE.
5. REPEAT PROCESS UNTIL BOTH BRACKETS ARE INSTALLED AND LOOSE ON VEHICLE FOR ALIGNMENT. BE SURE THE SPACERS ARE BETWEEN THE MOUNTING BRACKETS AND BUMPER.
6. ATTACH THE GRILLE GUARD TO THE MOUNTING BRACKETS BY USING THE MACHINE AND HAIR PINS.
7. ALIGN AND ADJUST GRILLE GUARD TO THE CONTOURS AND LINES OF THE TRUCK SIDE TO SIDE AND/OR UP AND DOWN USING THE SLOTS IN THE GRILLE GUARD MOUNTING BRACKETS.
8. OPEN AND CLOSE THE GRILLE GUARD TO ENSURE PROPER ALIGNMENT OF THE LATCHES.
9. TIGHTEN THE BOLTS AND/OR NUTS FIRMLY.
10. CONFIRM ALIGNMENT AGAIN AFTER COMPLETELY TIGHTENED, IF THE LATCH HITS THE STRIKER PIN TO MAKE IT DIFFICULT TO CLOSE, ADJUST MOUNTING BRACKETS ACCORDINGLY, DO NOT FORCE THE GUARD TO CLOSE IF IT IS NOT ALIGNED PROPERLY.

APPROXIMATE INSTALL TIME: 20-30 MINUTES

## **CLASS 8 INTERNATIONAL 9200/9400 (1997-CURRENT)**

### **OPERATING INSTRUCTIONS**

ONCE THE GUARD HAS BEEN INSTALLED PROPERLY, THE GUARD MUST BE MANUALLY LOWERED AND RAISED FOR THE HOOD TO OPEN AND CLOSE. THE HOOD CAN NOT BE OPENED WITH THE GUARD IN THE CLOSED POSITION.

#### **OPENING HOOD**

1. APPLY PRESSURE WITH SHOULDER TO ONE OF THE CROSS TUBES WHILE REACHING BEHIND UPRIGHTS WITH BOTH HANDS, (ONE HAND FOR EACH UPRIGHT) AND RELEASE BOTH LEFT AND RIGHT LATCH LEVERS.
2. HANGING ON TO THE CENTER RING OF THE GUARD, SLOWLY WALK AWAY FROM TRUCK AS THE GUARD LOWERS TO THE STOPS.
3. WITH THE GUARD OPEN PARALLEL TO THE GROUND, STEP THROUGH THE GUARD, NOT ON THE GUARD, TO THE HOOD AND OPEN THE HOOD AS USUAL. WHILE OPENING THE HOOD, BE CAREFUL WHILE WALKING BACK FROM THE TRUCK TO ONCE AGAIN STEP OVER THE GUARD AND NOT ON THE GUARD.

#### **CLOSING HOOD**

1. CLOSE THE HOOD AS USUAL, REMEMBERING TO STEP THROUGH THE GUARD AND NOT ON THE GUARD.
2. LIFT THE GUARD BY THE CENTER RING AND APPLY PRESSURE TO THE TOP OF THE CENTER RING UNTIL THE RUBBER BUMPERS IN THE MOUNTING BRACKETS COMPRESS AND THE LATCHES CLICK TO THE SECOND SETTING.

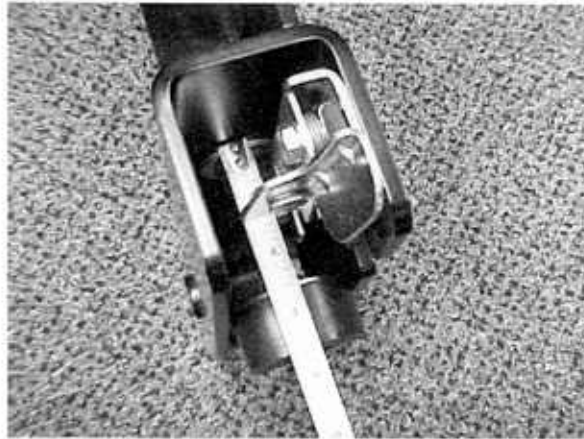
#### **REMOVING GUARD**

1. IF THE GRILLE GUARD EVER NEEDS TO BE REMOVED FROM THE TRUCK, LOWER THE GUARD TO THE OPEN POSITION.
2. CAREFULLY REMOVE THE 2 HAIR PINS FROM THE BOTTOM OF THE GUARD.
3. AFTER BOTH HAIR PINS HAVE BEEN REMOVED, SUPPORT THE GUARD AND REMOVE THE HINGE PINS FROM BOTH UPRIGHTS.
4. THE GUARD IS NOW UNATTACHED FROM THE TRUCK.

## CLASS 8 INTERNATIONAL 9200/9400 (1997-CURRENT)

### DAMPENER ADJUSTING INSTRUCTIONS

THE DAMPENER IS SET AT THE FACTORY, TO APPROXIMATELY 3-9/16" FROM THE INSIDE SURFACE OF THE CHANNEL TO THE FACE OF THE DAMPENER, BUT SHOULD IT EVER NEED TO BE ADJUSTED, FOLLOW THESE STEPS:



(FACTORY SET TO APPROXIMATELY 3-9/16")

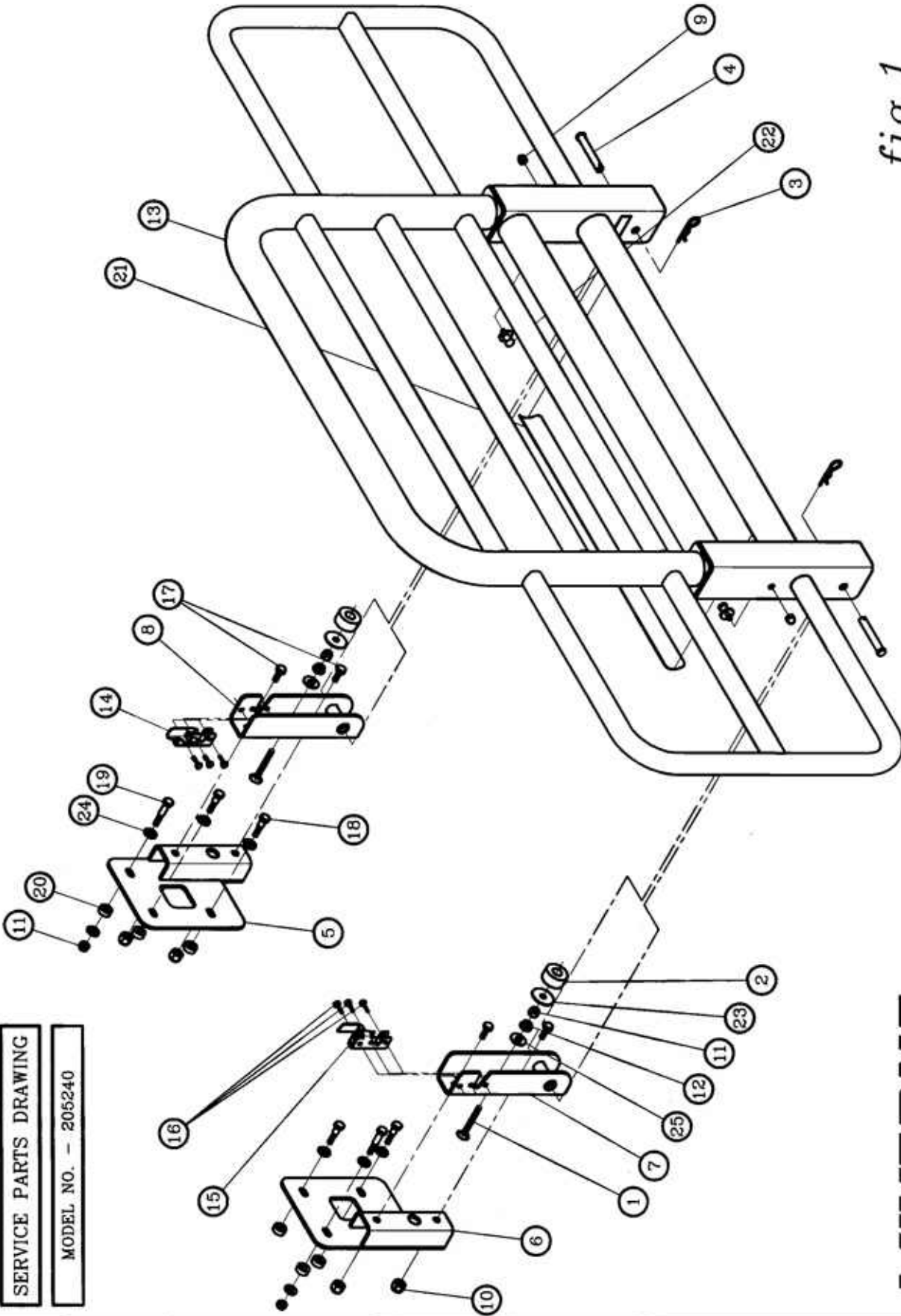
1. REMOVE THE DAMPENER AND THE WASHER.
2. ADJUST THE NYLOCK NUT, BEHIND THE DAMPENER, IN OR OUT AS REQUIRED.
3. REINSTALL THE DAMPENER AND THE WASHER.
4. DO THE SAME FOR THE OPPOSITE SIDE.
5. IF THE DAMPENER IS TOO LOOSE, THERE WILL BE EXCESSIVE PLAY IN THE GUARD CAUSING IT TO VIBRATE
6. IF THE DAMPENER IS TOO TIGHT THERE WILL BE EXCESSIVE PRESSURE ON THE LATCH MAKING IT DIFFICULT TO OPEN AND CLOSE.

## CLASS 8 INTERNATIONAL 9200/9400 (1997-CURRENT)

### SERVICE PARTS LIST

ITEM	PART NO.	QTY	DESCRIPTION
1	100104	2	BOLT - CARRIAGE, 1/2-13 X 3-1/2, FT, ZP
2	105256	2	BUMPER - ELASTOMER, BLACK, 2.00
3	100159	2	HAIR PIN - 9GA, ZP
4	105263	2	MACHINE PIN - Ø5/8 X 3-5/8, ZP
5	205248	1	MOUNTING BRACKET - LH
6	205249	1	MOUNTING BRACKET - RH
7	205126	1	MOUNTING BRACKET WELDMENT - RH
8	205127	1	MOUNTING BRACKET WELDMENT - LH
9	105254	2	NUT - CAP (ACORN), 7/16-14, SST
10	105655	4	NUT - NYLOCK, 9/16-12, SST
11	105654	4	NUT - NYLOCK, 1/2-13, ZP
12	100123	2	NUT - SERRATED FLANGE, 1/2-13, ZP
13	205241	1	RING WELDMENT - SST
14	105223	1	ROTARY LATCH - LH
15	105222	1	ROTARY LATCH - RH
16	100647	6	SCREW - HHC, 5/16-18 X 1, ZP
17	105656	4	SCREW - HHC, 9/16-12 X 1-1/2, SST
18	100091	4	SCREW - HHC, 1/2-13 X 2, ZP
19	100093	2	SCREW - HHC, 1/2-13 X 2-1/2, ZP
20	106653	6	SPACER - ZP, 0.540 X 1.125 X 0.400
21	105261	1	STEP PAD - 31"
22	105224	2	STRIKER PIN
23	105257	2	WASHER - FLAT, 2.00 X 0.516 X 0.104, ZP
24	104995	8	WASHER - FLAT, 1/2, SST
25	100140	2	WASHER - FLAT, 9/16, ZP

fig.1



SERVICE PARTS DRAWING  
MODEL NO. - 205240

**Louverne**  
ISO9001:2015 CERTIFIED TRUCK  
EQUIPMENT INC.  
1700 Birch Street  
Brandon, SD 57005