

INSTALLATION INSTRUCTIONS FOR MOUNTING

LUVERNE GRILLE GUARD WITH THE FOLLOWING MODEL NO.:
330930/330933 & 340930/340933 ON:

2009 AND NEWER DODGE RAM 1500 SERIES TRUCKS

1. READ THE INSTRUCTIONS COMPLETELY AND CHECK TO MAKE SURE THAT ALL OF THE REQUIRED PARTS ARE ON HAND BEFORE STARTING THE INSTALLATION. THE CARTON SHOULD CONTAIN:
 - (1) OUTER RING PACKAGE
 - (1) OUTER RING ASSEMBLY
 - (1) UPRIGHT PACKAGE
 - (1) UPRIGHT ASSEMBLY, RH
 - (1) UPRIGHT ASSEMBLY, LH
 - (2) MOUNTING BRACKET, FRAME
 - (2) MOUNTING BRACKET, BOTTOM
 - (1) HARDWARE PACKAGE
 - (1) CUSTOMER SERVICE PACKAGE

REFER TO SHEETS #1, #2, #3, #4 & #5 FOR GUARD ASSEMBLY & INSTALLATION INSTRUCTIONS 2-13

2. ASSEMBLE THE UPRIGHTS (ITEMS #2 & #3) TO THE RING (ITEM #1) USING THE 7/16"-14 X 1-1/2" HEX BOLTS (ITEM #11), 7/16" LOCK WASHERS (ITEM #17) AND 7/16" FLAT WASHERS (ITEM #19). MAKE SURE THAT THE BACK EDGES OF THE UPRIGHTS ARE PARALLEL TO THE RING BAR AND THERE IS EQUAL GAP ON EACH SIDE OF THE BAR AND THE INSIDE OF THE UPRIGHT. TIGHTEN THE BOLTS TO 54 FT LBS.
3. INSTALL THE 4 UPRIGHT TRIM PIECES (ITEM #20) TO THE REAR EDGES OF THE UPRIGHTS WHERE THEY WILL CONTACT THE BUMPER.
4. REMOVE THE TWO LOWER NUTS THAT HOLD THE BUMPER TO THE FRAME ON EACH SIDE.
5. INSTALL THE TWO FRAME MOUNTING BRACKETS (ITEM #4) TO THE FRAME PLATES ON THE END OF THE FRAME USING THE 1/2"-20 X 3/4" HEX BOLTS (ITEM #13) TO ALIGN THE BRACKETS WITH THE FRAME.
6. REINSTALL THE FACTORY NUTS ON THE BOLTS AND TIGHTEN TO 70 FT LBS.
7. CUT OUT THE DRILLING TEMPLATES FROM SHEET #5 OF THE INSTRUCTIONS AND INSERT THEM INTO THE ENDS OF THE PLASTIC FILLER PANEL IN THE BUMPER. DRILL A Ø1" HOLE WITH A HOLE SAW THROUGH BOTH ENDS OF THE PLASTIC FILLER PANEL.
8. INSERT THE 1/2"-13 X 6-1/2" HEX BOLTS (ITEM #9), 1/2" FLAT WASHERS (ITEM #18) AND 1/2" LOCK WASHERS (ITEM #16) FROM THE BACK SIDE INTO THE OUTSIDE HOLES IN THE MOUNTING BRACKETS.
9. INSTALL THE GRILLE GUARD ON TO THE BUMPER AND FASTEN WITH THE 1/2"-13 X 6-1/2" HEX BOLTS (ITEM #9), 1/2" FLAT WASHERS (ITEM #18) AND 1/2" LOCK WASHERS (ITEM #16).



(A LUVERNE Company)

1200 E. Birch St.

Brandon, SD 57005

202464 SHEET 1 OF 5 19SEP08

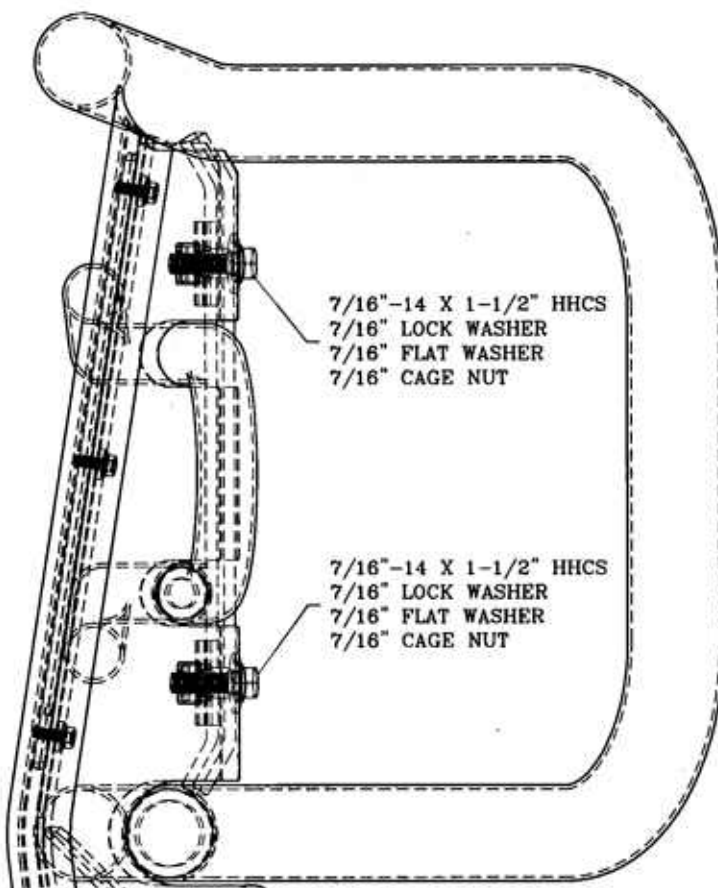
10. CHECK THAT THE GRILLE GUARD IS CENTERED AND VERTICAL ON THE BUMPER AND THE UPRIGHTS ARE SEATED PROPERLY IN THE HOLES IN THE FACE OF THE BUMPER. THEN TIGHTEN THE TWO 1/2" BOLTS SECURING THE GRILLE GUARD TO THE BUMPER SECURELY.
11. POSITION ONE OF THE BOTTOM MOUNTING BRACKETS (ITEM #5) SO THAT THE HOLES IN THE BRACKET LINE UP WITH THE HOLE IN THE BOTTOM OF THE UPRIGHT AND THE HOLE IN THE BOTTOM OF HORN HANGING DOWN FROM THE FRAME AND MARK THE AIR DAM WHERE THE MOUNTING BRACKET WILL NEED TO PASS THROUGH THE LOWER LIP OF THE AIR DAM.
12. REPEAT STEP #11 ON THE OTHER SIDE AND NOTCH OUT THE AIR DAM WITH A Ø1" HOLE SAW AND A UTILITY KNIFE.
13. INSTALL THE 7/16"-14 X 1-1/2" HEX BOLTS (ITEM #11), 7/16" LOCK WASHERS (ITEM #17) AND 7/16" FLAT WASHERS (ITEM #19) IN THE UPRIGHT SIDE OF THE BRACKET AND INSTALL THE M12 X 1.5 X 35mm HEX BOLTS (ITEM #10), 1/2" LOCK WASHERS (ITEM #16) AND 7/16" FLAT WASHERS (ITEM #19) IN THE FRAME SIDE OF THE BRACKET . TIGHTEN TO 54 FOOT-POUNDS OF TORQUE

SERVICE PARTS LIST

ITEM	PART NO.	QTY	DESCRIPTION
1	202465	1	RING WELDMENT - CHROME
1	202472	1	RING WELDMENT - BLACK
2	202452	1	UPRIGHT WELDMENT - CHROME, RH
2	202470	1	UPRIGHT WELDMENT - BLACK, RH
3	202453	1	UPRIGHT WELDMENT - CHROME, LH
3	202471	1	UPRIGHT WELDMENT - BLACK, LH
4	202459	2	MOUNTING BRACKET - FRAME
5	202460	2	MOUNTING BRACKET - BOTTOM
6	201122	4	TAPPING BAR - 13.000"
7	202191	1	RUBBER EXTRUSION - MACHINED, RH, 202176
8	202192	1	RUBBER EXTRUSION - MACHINED, LH, 202176
9	108085	2	HEX HEAD SCREW - 1/2"-13 X 6-1/2", ZP
10	100676	2	HEX HEAD SCREW - M12 X 1.5 X 35mm, ZP
11	100070	6	HEX HEAD SCREW - 7/16"-14 X 1-1/2", ZP
12	103715	12	SELF TAPPING SCREW - 1/4"-20 X 5/8", ZP
13	100006	2	HEX HEAD SCREW - 1/4"-20 X 3/4", ZP
14	100083	6	CAPTIVE NUT - 7/16"-14, BLACK
15	107383	2	CAPTIVE NUT - 1/2"-13, BLACK
16	100121	4	LOCK WASHER - 1/2", ZP
17	100078	6	LOCK WASHER - 7/16", ZP
18	100118	2	FLAT WASHER - 1/2", ZP
19	100081	8	FLAT WASHER - 7/16", ZP
20	202461	4	TRIM - UPRIGHT, 12-1/2" 330930
21	100252	1	DECAL - LOGO, 1 X 3



(A LIVERNE Company)

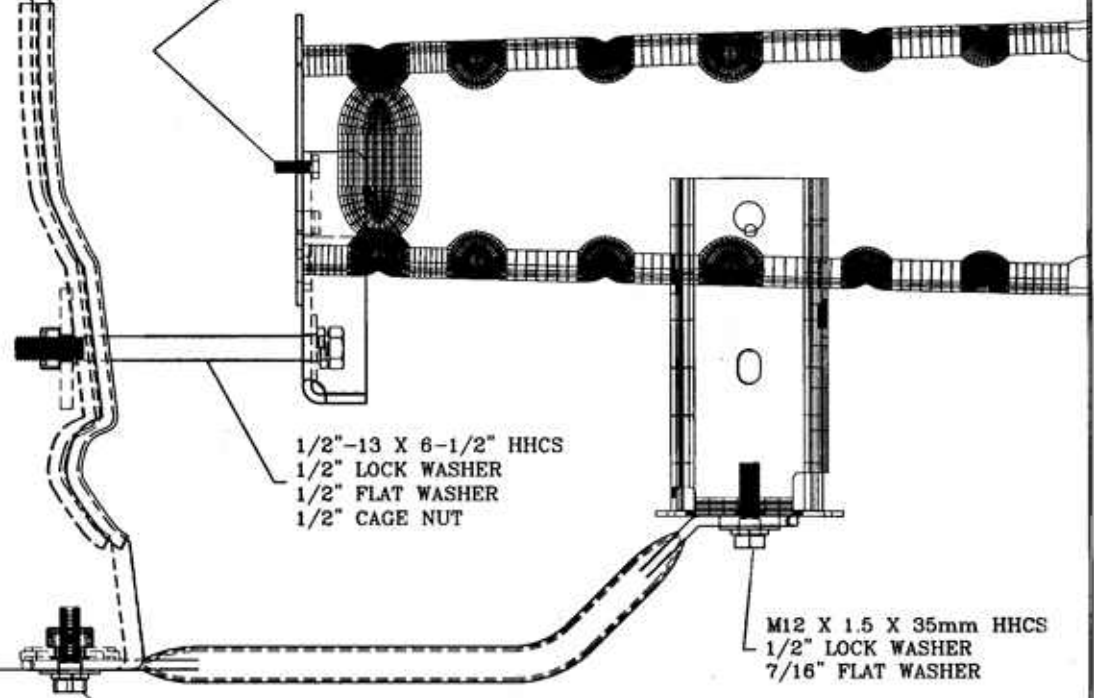


7/16"-14 X 1-1/2" HHCS
 7/16" LOCK WASHER
 7/16" FLAT WASHER
 7/16" CAGE NUT

7/16"-14 X 1-1/2" HHCS
 7/16" LOCK WASHER
 7/16" FLAT WASHER
 7/16" CAGE NUT

fig.1

USE THE 1/4"-20 BOLT TO ALIGN THE MOUNTING BRACKET TO THE FRAME PLATE. REINSTALL THE FACTORY NUTS THAT HOLD THE BUMPER TO THE FRAME



1/2"-13 X 6-1/2" HHCS
 1/2" LOCK WASHER
 1/2" FLAT WASHER
 1/2" CAGE NUT

M12 X 1.5 X 35mm HHCS
 1/2" LOCK WASHER
 7/16" FLAT WASHER

7/16"-14 X 1-1/2" HHCS
 7/16" LOCK WASHER
 7/16" FLAT WASHER
 7/16" CAGE NUT

SERVICE PARTS LIST

MODEL NO. - 330930/330933
 MODEL NO. - 340930/340933

FACTORY NUTS

REMOVE FACTORY NUTS
 INSTALL MOUNTING
 BRACKETS REINSTALL NUTS.

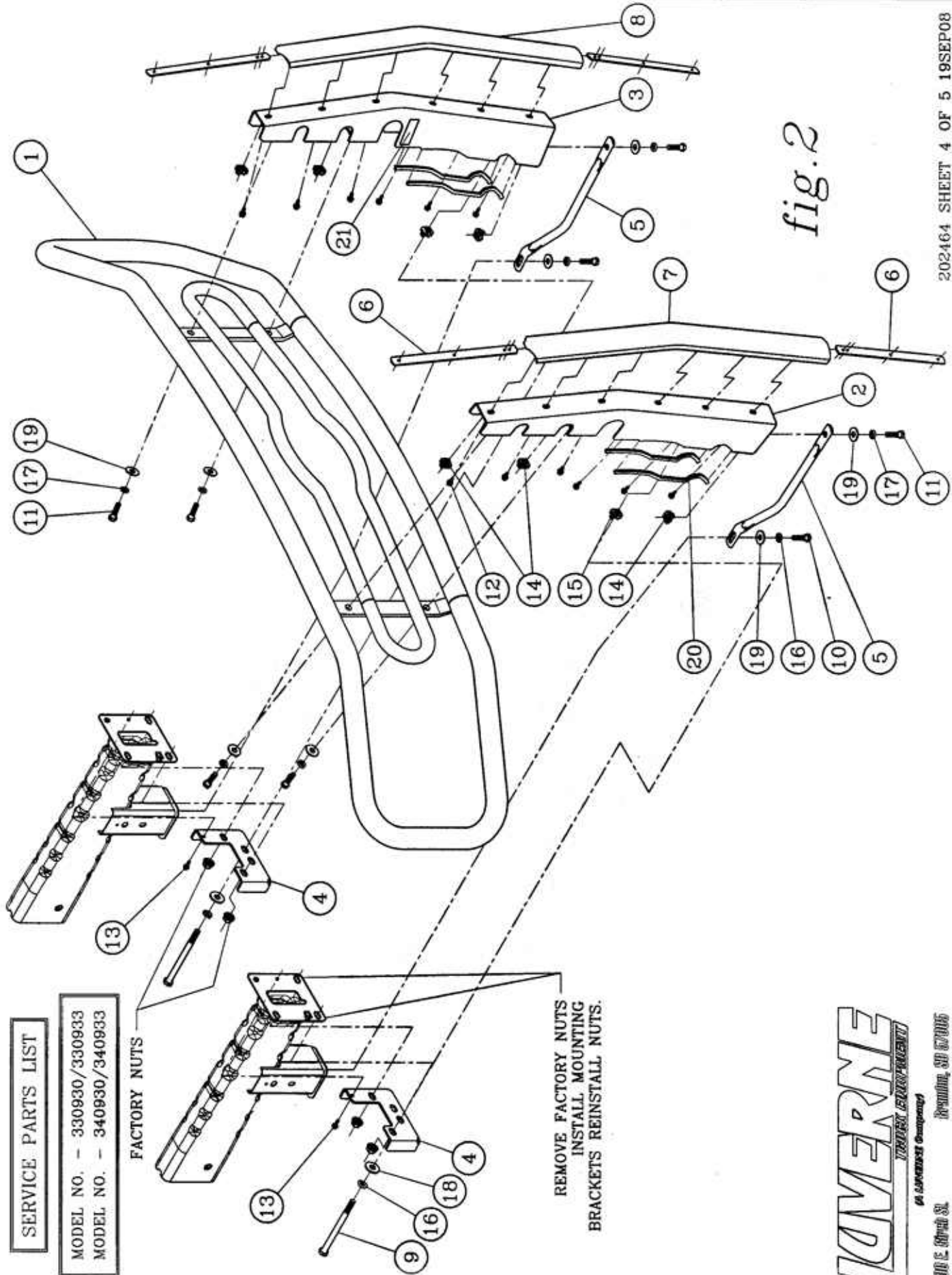


fig.2

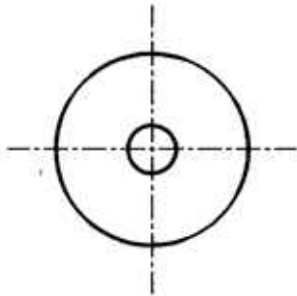
KOVERNE
 TRUCK EQUIPMENT

GA. JAPANESE EQUIPMENT

1200 E. 80th St. Bowling, SD 57005

TOP MOUNTING BOLT
DRILL TEMPLATE

RIGHT HAND SIDE



LEFT HAND SIDE

