

## INSTALLATION INSTRUCTIONS AND PARTS LIST

APPLICATION: MODEL 480711 (STAINLESS STEEL) SIDE ENTRY STEPS ON:  
2007 CHEVROLET SILVERADO AND GMC SIERRA REGULAR CAB PICKUPS



### NO DRILL APPLICATION

1. READ INSTRUCTIONS COMPLETELY AND CHECK TO MAKE SURE THAT ALL REQUIRED PARTS (LISTED ON SERVICE PARTS LIST) ARE ON HAND BEFORE STARTING THE INSTALLATION.
2. PEEL AWAY THE PROTECTIVE VINYL COVERING AND CLEAN THE TOP OF EACH PRE ASSEMBLED STEP PLATE TO REMOVE ANY VINYL COVERING RESIDUE. (A GOOD GLASS CLEANER IS SUGGESTED).
3. THE SIDE ENTRY STEP ASSEMBLIES SHOULD BE MOUNTED TO THE PINCH WELD AND VERTICAL WALL OF THE ROCKER PANEL AS FOLLOWS.
4. TAKE OUT THE PLASTIC BODY PLUGS THAT ARE LOCATED ON THE VERTICAL WALL OF THE ROCKER PANEL AND INSERT THE U-NUT(ITEM#3) AS SHOWN .
5. POSITION THE SIDE ENTRY STEP SO THAT THE HOLES ON THE BRACKET LINE UP WITH THE HOLES ON THE INSIDE WALL OF THE ROCKER PANEL.INSERT AND FINGER TIGHTEN THE BOLTS AND WASHER (ITEM# 6 AND #5).
6. PLACE NYLON WASHER (ITEM#4) BETWEEN THE BRKT AND THE ROCKER PANEL BOTTOM HOLE INSERT BOLT,WASHER AND PINCH WELD SUPPORT (ITEM# 6,10 AND #5) THROUGH THE HOLE AND PLACING A NUT (ITEM#7) ON THE BACK. PRESS SIDE ENTRY STEP DOWN AND BACK TIGHTEN BOTTOM BOLTS FIRST THEN TOP.

**TORQUE ALL BOLTS TO 65FT LBS**

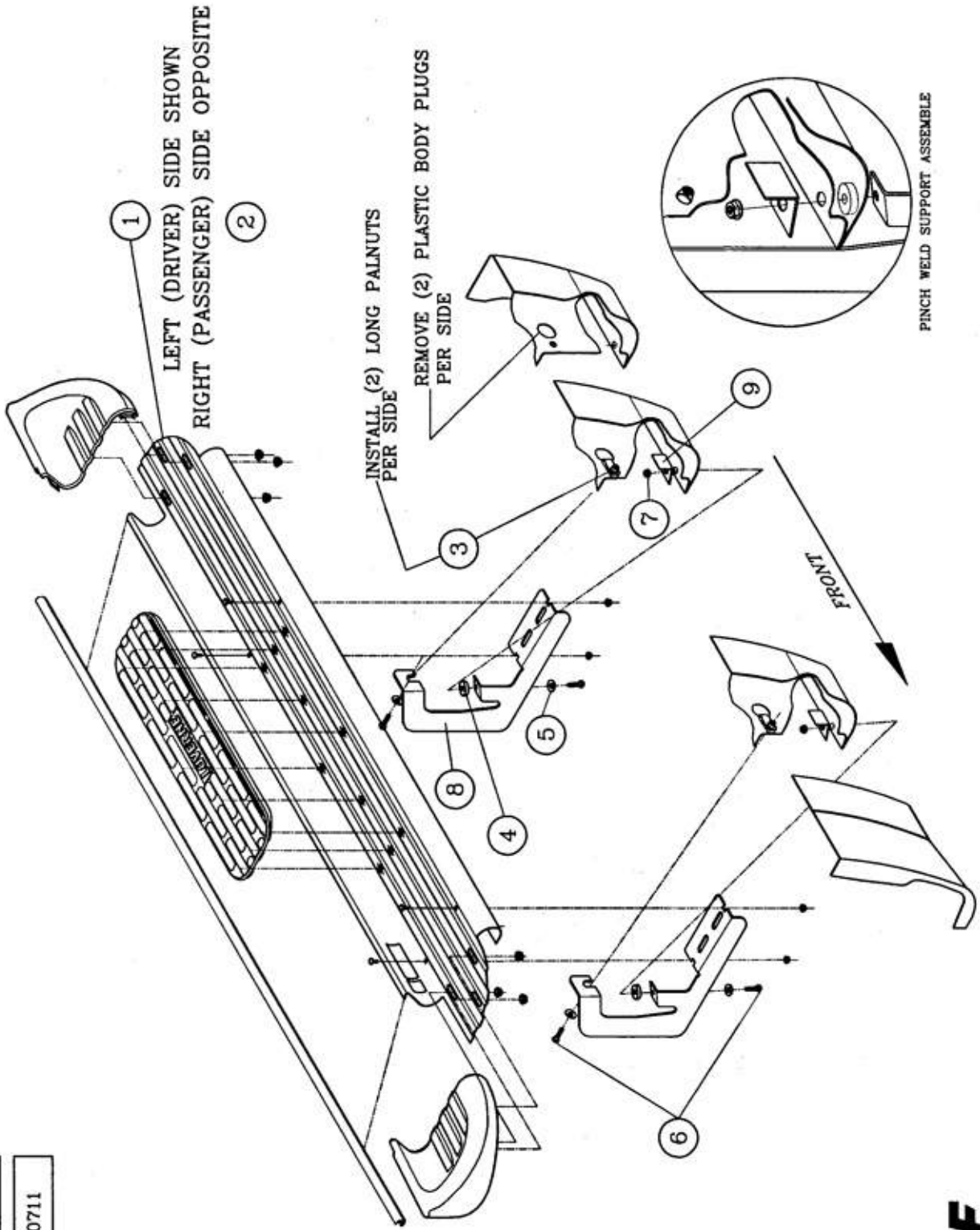
### SERVICE PARTS LIST

ITEM	PART NO.	QTY	DESCRIPTION
1	551370	1	STEP PLATE-SES,RH,
2	551371	1	STEP PLATE-SES,LH,
3	105541	4	U-NUT,5/16"-18
4	107182	4	WSHER-NYLON,312 X 1.24 X .25
5	102734	8	5/16" - FLATWASHER SST
6	100647	8	5/16" X 1.00" SCR ZP
7	102680	4	NUT SERR FLG,SST,5/16"
8	551382	4	BRKT-MTG, SES/MS 07 GM PKUPS
9	551666	4	BRKT-MTG, PINCH WELD SUPPORT

# GM REG CAB

SERVICE PARTS LIST

MODEL NO. -480711



**LUVERNE**  
TRUCK  
EQUIPMENT  
INC.  
1200 Birch Street  
Brandon, SD 57005

REVISED 20OCT08 LVL A  
551377 SHEET 2 30JAN07

## INSTALLATION INSTRUCTIONS AND PARTS LIST

APPLICATION: MODEL 480711 (STAINLESS STEEL) SIDE ENTRY STEPS ON:  
1999 TO 2007 CLASSIC CHEVROLET SILVERADO AND GMC SIERRA REGULAR CAB  
PICKUPS

### DRILL APPLICATION

5. READ INSTRUCTIONS COMPLETELY AND CHECK TO MAKE SURE THAT ALL REQUIRED PARTS (LISTED ON SERVICE PARTS LIST) ARE ON HAND BEFORE STARTING THE INSTALLATION.
6. PEEL AWAY THE PROTECTIVE VINYL COVERING AND CLEAN THE TOP OF EACH PRE ASSEMBLED STEP PLATE TO REMOVE ANY VINYL COVERING RESIDUE. (A GOOD GLASS CLEANER IS SUGGESTED).
7. THE SIDE ENTRY STEP ASSEMBLIES SHOULD BE MOUNTED TO THE PINCH WELD AND VERTICAL WALL OF THE ROCKER PANEL AS FOLLOWS.
8. CLAMP THE STEP INTO POSITION (THE STEP SHOULD BE FLUSH WITH THE BACK OF THE CAB).DRILL A (11/32") HOLE IN THE PINCH WELD AREA FRONT AND BACK LOCATIONS.
9. PLACE NYLON WASHER(ITEM#4) BETWEEN BRKT AND ROCKER PANEL BOTTOM WHERE YOU JUST DRILLED AND INSERT BOLT,WASHER,PINCH WELD SUPPORT AND NUT(ITEMS# 6, 5,10 AND 7) TO HOLD STEP INTO PLACE WHILE MARKING THE TOP HOLE LOCATION FOR DRILLING.
10. AFTER MARKING THE TOP HOLE LOCATIONS FRONT AND BACK TAKE STEP OFF AND DRILL (7/32") HOLES.
11. PLACE THE STEP BACK UP Lining the hole on the top location up with the bracket and place a screw (ITEM#9) and snug the screw.BUT NOT TO TIGHT.
12. REINSTALL THE ROCKER MOUNT LIKE BEFORE IN STEP (5).
13. TIGHTEN THE TOP SCREWS UP ALL THE WAY (DO NOT OVER TIGHTEN).

**TORQUE ALL BOLTS TO 65FT LBS**

### SERVICE PARTS LIST

ITEM	PART NO.	QTY	DESCRIPTION
1	551370	1	STEP PLATE-SES,RH,
2	551371	1	STEP PLATE-SES,LH,
3	105541	4	U-NUT,5/16"-18
4	107182	4	WSHER-NYLON,312 X 1.24 X .25
5	102734	8	5/16" - FLATWASHER SST
6	100647	8	5/16" X 1.00" SCR ZP
7	102680	4	NUT SERR FLG,SST,5/16"
8	551382	4	BRKT-MTG, SES/MS 07 GM PKUPS
9	104267	4	5/16"X3/4" HX/W/HD-AB
10	551666	4	BRKT-MTG,PINCH WELD SUPPORT

